

Welcome

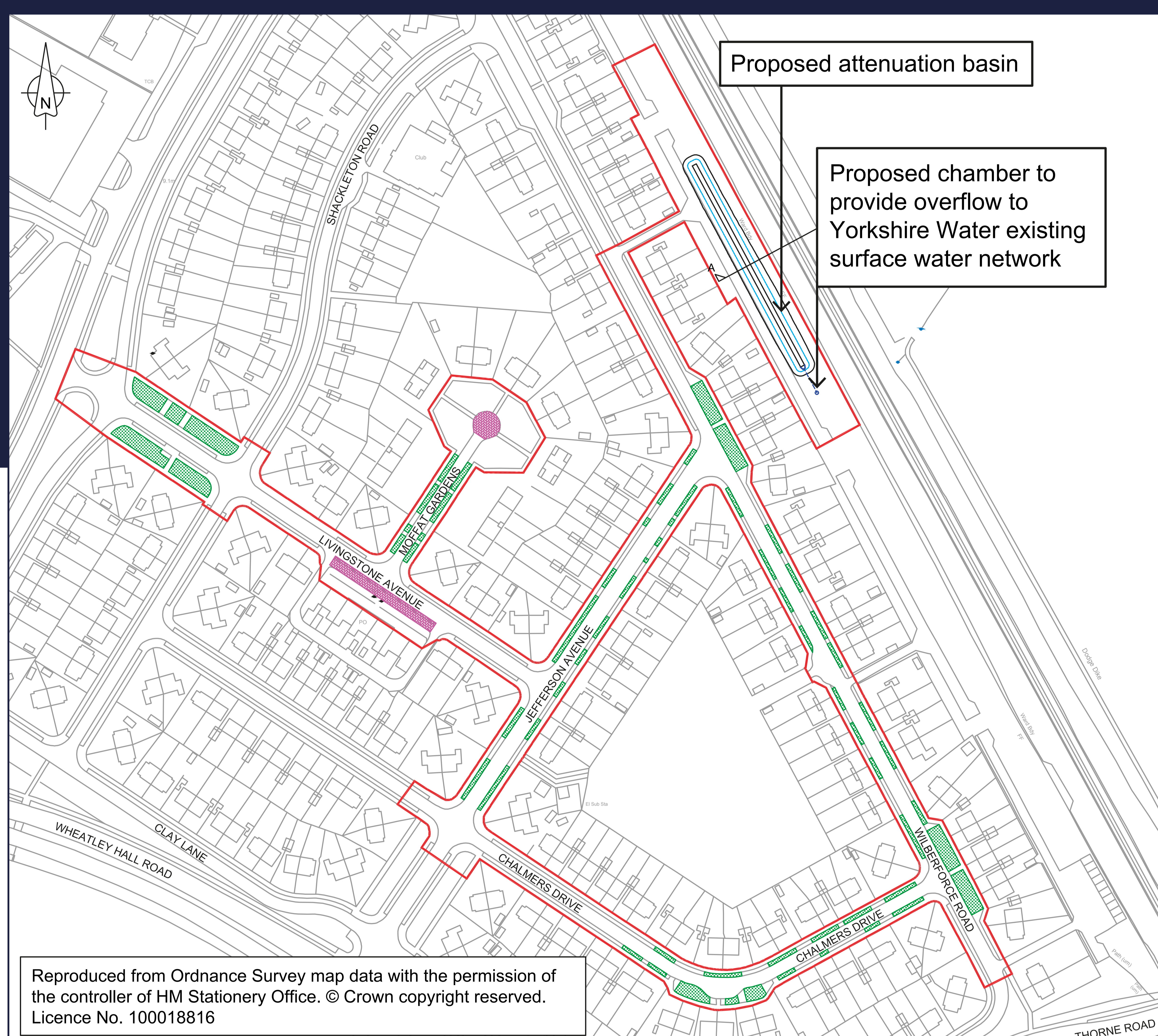
Welcome to our consultation about proposed measures to address flooding in your area.

We are keen to hear your feedback.



Introduction

Yorkshire Water and City of Doncaster Council are proposing innovative new measures to minimise flooding and enhance the environment.



We appreciate that flooding is an issue of ongoing concern for residents and businesses.

Our proposals for an attenuation pond and new sustainable drainage systems (SuDS) will help tackle the issue of surface water flooding, enhance the look of the local area and deliver a range of other community benefits.

In this room you will find full details of the project, including a feedback form for you to share your views. We are keen to hear your feedback on our proposals and would encourage local people and groups to share their thoughts on how the new features might look. For example, you can help us decide the types of flowers and plants we include in our designs that will minimise flooding while also making the area more attractive.

Please take the opportunity to speak to a member of our project team, who will be happy to answer your questions.

Our proposals

1. Attenuation pond

We propose to build an attenuation pond in an area of grassland that runs behind residential properties on Wilberforce Road and alongside the railway line.

Attenuation ponds, also known as flood or balancing ponds, work by collecting and temporarily storing storm water.

This water is gradually released at a controlled rate, thereby slowing down the flow of stormwater and preventing flooding.

They are very effective for managing surface water run-off during prolonged rain.

The attenuation pond near Wilberforce Road is expected to be dry most of the year but will be planted with appropriate species that tolerate occasional flooding.

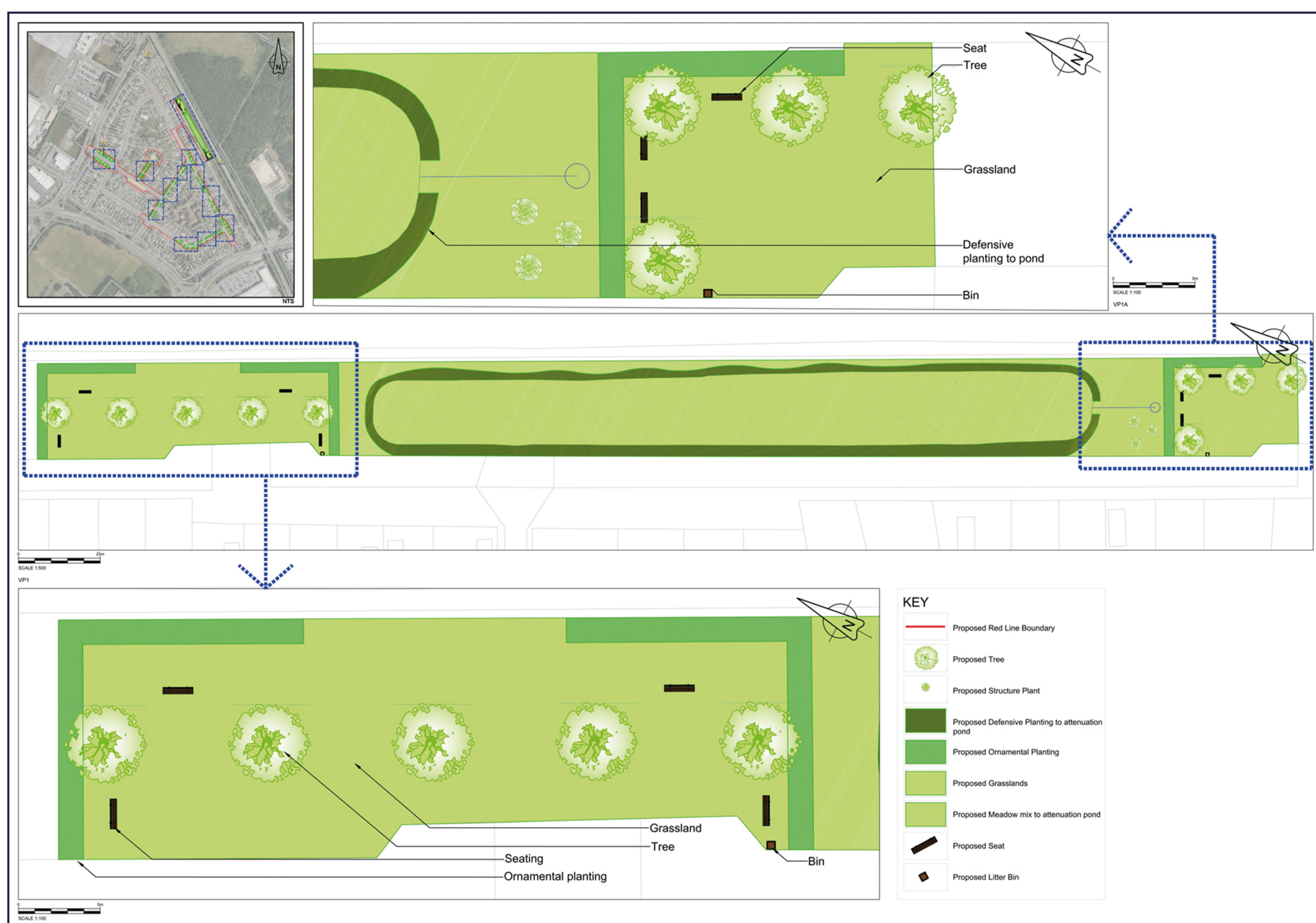
Further planting on the perimeter and on either side of the pond will further restrict the flow of water directly to the structure.

The area will be further enhanced with the addition of new trees, grassland and bench seats, creating an attractive green space for community use.

For safety reasons, measures will be introduced to deter children from accessing the pond to play.



The proposed site for an attenuation pond and community use area



Proposals for the attenuation pond site

Our proposals

2. SuDs features

We also propose to introduce a range of smaller SuDs features on grass verges in Jefferson Avenue, Chalmers Drive, Wilberforce Road and Moffat Gardens.

These rain gardens are designed to manage rainfall in urban areas in a sustainable way. They comprise a planted depression that absorbs rainwater from impervious surfaces such as highways, roofs and driveways.

This process reduces the rate of runoff, helping to prevent flooding, while also providing a habitat for wildlife and an attractive landscape feature.

SuDS rain gardens are particularly effective in managing 'clean' surface water and can be integrated into private properties or public spaces. They are easy to maintain, can be retrofitted into existing landscapes, and offer ecological benefits by supporting native vegetation that thrives in wet conditions.

In addition to the rain gardens, two areas of permeable hardstanding are also proposed – at the turning head of Moffat Gardens and adjacent to the shops on Livingstone Avenue.



Permeable paving



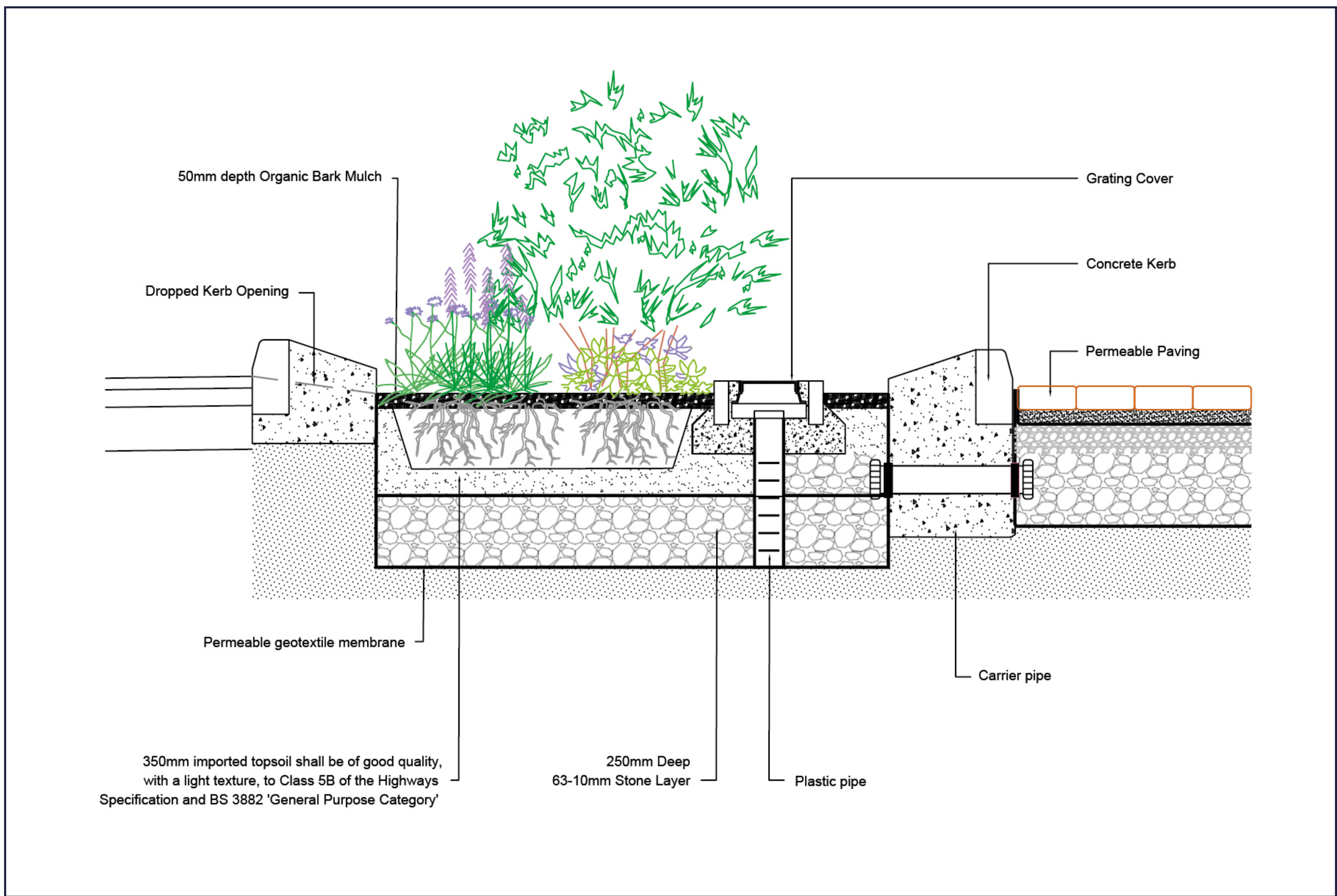
YorkshireWater



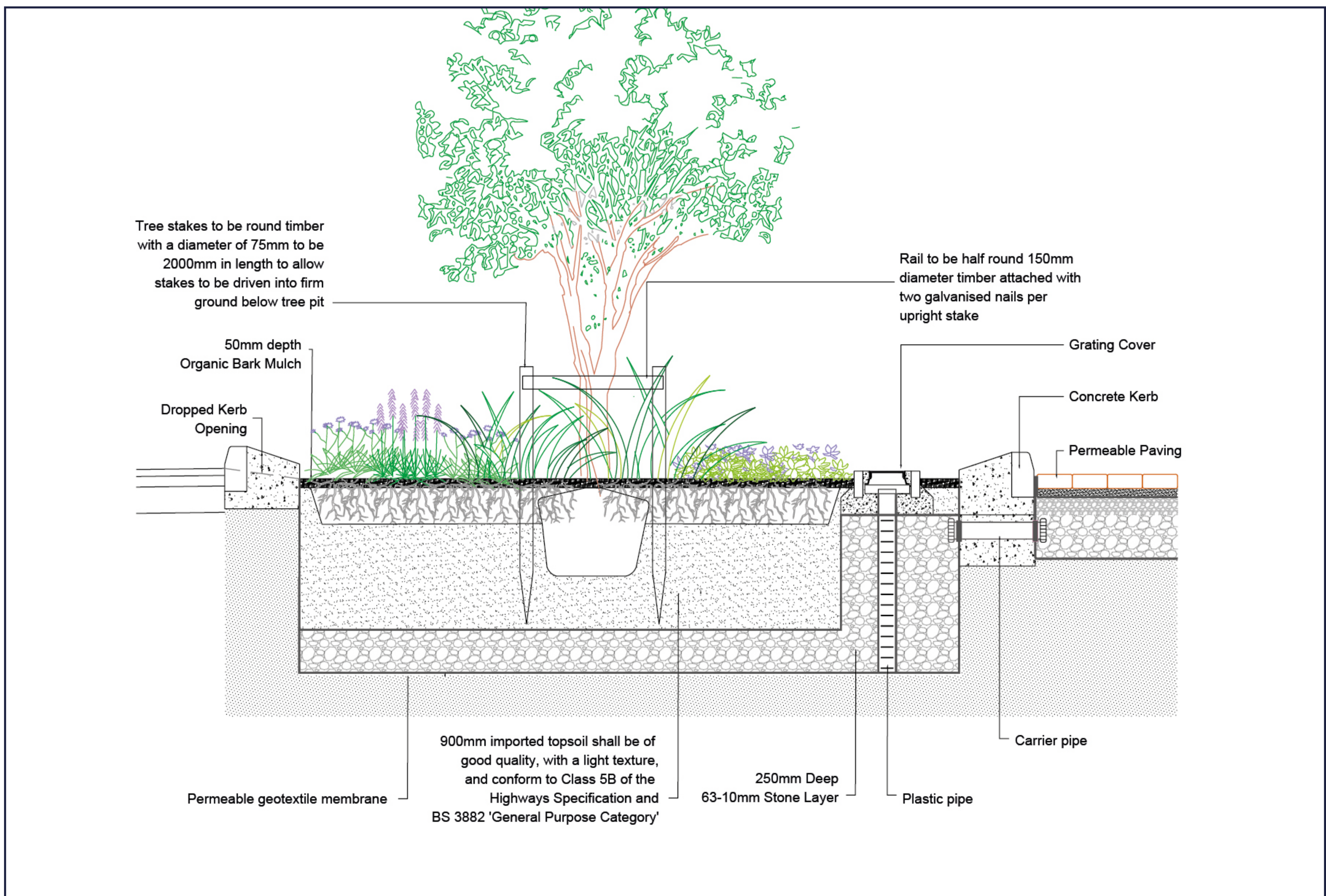
City of Doncaster Council

Rain gardens

Example 1



Example 2

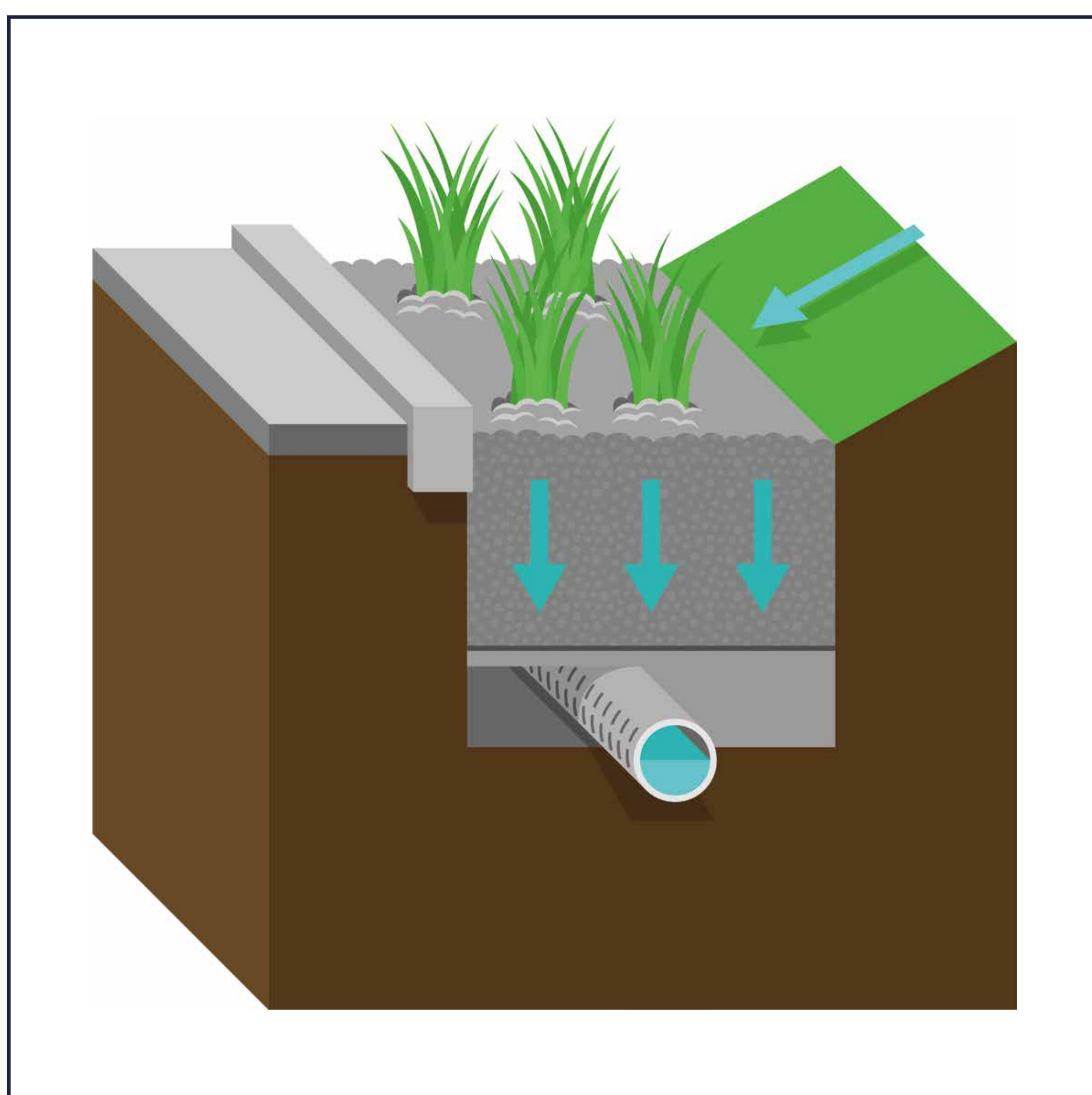


The benefits

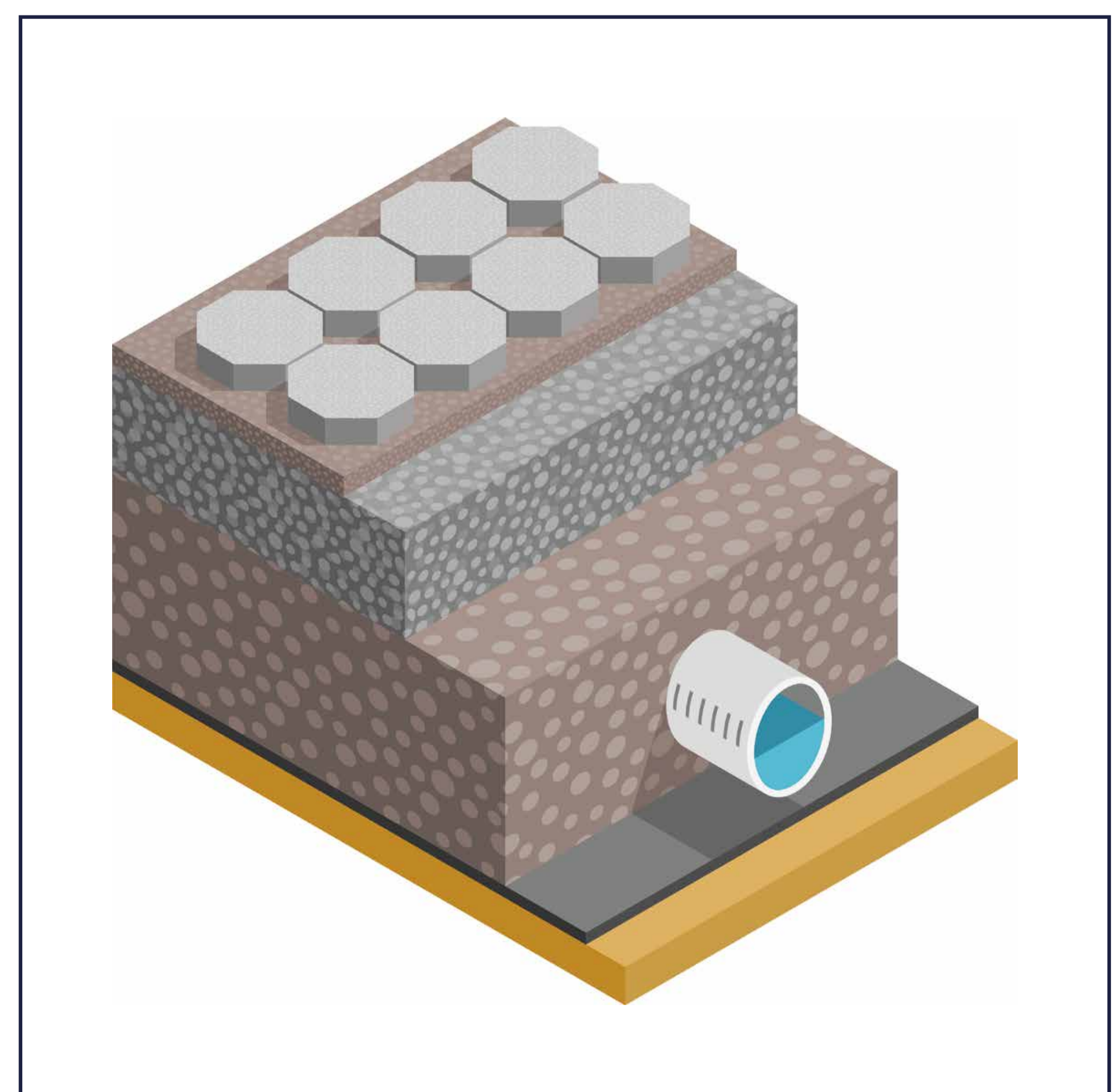
These new Sustainable Drainage Systems (SuDS) will bring a range of benefits to the local community.

They will:

- Increase the level of flood protection for residents and businesses
- Enhance the natural environment by improving water quality, amenity and biodiversity
- Reduce flooding concerns of local residents
- Deliver a practical solution to flood risk by fitting SuDS in open spaces that cause minimal disruption
- Boost local awareness of flooding and flooding issues
- Create a sustainable and robust response to the effects of climate change
- Facilitate wider discussions around parking, speeding and any potential increase in amenity areas.



SuDS diagram



Permeable paving diagram

Planting options

We have put together a brochure of trees, plants and shrubs that are suited to the environmental conditions, both wet and dry, and that are visually appealing and contribute to local biodiversity. Ask a member of the team to show you a copy.

We are keen to hear which of these options you would like to see in our designs.

We also hope that local residents will be interested in maintaining these features once they are installed.



Juniper



Skimmia Japonica 'Fragrans'



Cercis Canadensis



City of
Doncaster
Council

Have your say

We are keen to hear your views on our proposals and encourage local people and groups to contribute to the aesthetics of the features by choosing trees, plants and shrubs.



Feedback forms are available here today or you can share your views on our online feedback form by scanning the QR code or visiting:

doncaster.gov.uk/services/get-involved/consultations

Our consultation will run until midnight on Friday, 27 September.

Thank you for your interest in the project. We look forward to hearing your feedback.

